

1. Descriptions of new Species of Beetles belonging to the Family *Erotylidæ*. By HENRY S. GORHAM, F.Z.S.

[Received March 5, 1883.]

(Plate XVIII.)

Three years ago I had the opportunity of comparing with a portion of my own collection of *Erotylidæ* the one formed by the late G. R. Crotch and now in the Museum of Natural History at Cambridge. It is well known that my friend, with whom I spent many pleasant hours in their examination, spared no time or trouble in both acquiring and collating the types in those museums and private collections which he was able to reach. In the present paper it is my object to describe some very conspicuous species which have come into my own possession, from various sources, some from the private collection of Mr. G. R. Waterhouse, some from the collection made in the Philippines by Herr C. Semper, and others from the last collection brought by Mr. Buckley from Bolivia and Peru.

I have commenced with the *Encaustini*, with which it appears to me a linear arrangement should be headed. Their largely developed and powerful form, which is at least as much specialized as the genera placed before it by Lacordaire, seems to me of more importance than a recondite structure of the maxillæ. The genus *Aulacochilus*, again, is unnaturally separated by Lacordaire from *Episcapha*, to which I have here placed it in proximity. The present paper contains only an instalment of the new species known to me; the *Langurini*, *Triplacini*, and *Erotylini* proper must be left for a future time.

*List of new Species.*

- |   |  |
|---|--|
| 1. <i>Encaustes crotchi</i> . Philippine Islands.               | 16. <i>Episcapha difficilis</i> . Andaman Islands.           |
| 2. <i>Micrencaustes torquatus</i> . West Africa.                | 17. — <i>octopustulata</i> . Philippine Islands.             |
| 3. — <i>plagiatus</i> . Java?<br><i>Hybosoma</i> , genus novum. | 18. — <i>piciventris</i> . West Africa.                      |
| 4. <i>Hybosoma hydropicum</i> . Philippine Islands.             | 19. <i>Aulacochilus inclytus</i> . Philippine Islands.       |
| 5. — <i>striatum</i> . Philippine Islands.                      | 20. — <i>agaboides</i> . Philippine Islands.                 |
| 6. — <i>tetrastictum</i> . Philippine Islands.                  | 21. — —, var. ? <i>furciferus</i> . Philippine Islands.      |
| 7. <i>Megalodacne imperatrix</i> . Southeast Africa.            | 22. — <i>episcaphoides</i> . Andaman Islands.                |
| 8. — <i>furcata</i> . West Africa.                              | 23. <i>Pselaphacus mysticus</i> . Peru, Chancomayo.          |
| 9. <i>Triplatomia philippinensis</i> . Philippine Islands.      | 24. <i>Megischyrus elongatus</i> . Peru, Chancomayo.         |
| 10. — <i>andamanensis</i> . Andaman Islands.                    | 25. — <i>bartletti</i> . Peru, Chamicuros.                   |
| 11. — <i>gestroi</i> . Borneo, Sumatra.                         | 26. <i>Ischyrus peruvianus</i> . Peru.                       |
| 12. — <i>brahminica</i> . India, Assam.                         | 27. — <i>grammicus</i> . Peru, Chancomayo.                   |
| 13. — <i>siva</i> . India, Assam.                               | 28. <i>Lybas</i> ? <i>dorsalis</i> . Peru, Chamicuros.       |
| 14. <i>Episcapha semperi</i> . Philippine Islands.              | 29. <i>Palæolybas cychramoides</i> . West Africa, Camaroons. |
| 15. — <i>cordata</i> . West Africa.                             |  |

11. *TRIPLATOMA GESTROI*. (Plate XVIII. fig. 1.)

*Triplatoma gestroi*, Bedel, Ann. del Mus. Civ. di Genova, 1882, p. 440, t. x. f. 4.

*Nigra, parum nitida, prothorace subquadrato limbo laterali subincrassato, rubro variegato, subopaco; elytris distincte striatis, striis obsolete punctatis, striga subhumerali fasciisque tribus valde undulatis haud bene discretis rufis; femoribus rufo-cinctis.*

Long. 15-17 millim. ♂ ♀.

Mas. *tibiis anticis sinuatis, ad apicem torsis, intus carinatis.*

*Hab.* Borneo, Sarawak (*Wallace, coll. Lewis and Gorham, ♂*). Sumatra (*Leyden Mus., ♀*).

[Since this paper has been read, and the plate drawn, I have received one by M. Louis Bedel, published in the 'Annals of the Civic Museum of Natural History of Genoa' in December 1882, in which he has submitted the genera *Coptengis*, *Triplatoma*, and *Plagiopisthen* to revision. The genus *Triplatoma* is subdivided and its form changed to *Triplotoma*, which is retained for *T. picta*, *gestroi*, and *cypræa*. *T. gestroi* appears to be identical with the species which I have described and figured here, and to which I had given another name. I have seen specimens of this species since in the British Museum and in the possession of Mr. S. Olliff. The new genera proposed are *Trichulus* for *pubescens*, Cr., *Eudytus* for *bizonatus*, Cr., *Nesitis* for *attenuata*, Cr., *Linodesmus* for *cæcus*, F. *Trichulus* and *Linodesmus* are certainly geographical forms and better separated; but the remainder seem formed rather on specific than generic differences, a process of subdivision to which most genera of moderate size are equally liable, without any evident advantage being secured.—H. S. G., April 10th, 1883.]

12. *TRIPLATOMA BRAHMINICA*.

*Nigra, parum nitida, supra opaca; prothorace oblongo, crebre et distincte punctato; elytris fortiter sulcatis, interstitiis costatis, sulcis punctatis, fasciis duabus angustis, undulatis, rufis, una subbasilari, altera subapicali.*

Long. 21 millim.

*Hab.* India, Assam.

Head and thorax opaque, thickly covered with shallow but distinct round impressed points, under surface of the thorax nearly smooth, but the prosternum transversely wrinkled, its apex foveate. Elytra evenly and deeply sulcate, the intervening costæ smooth and shining, eight in number, uniting near the apex, the fifth and sixth costæ uniting some distance higher up, and also joining the fourth. The humerus obsolete, the apex expanded, subtruncate. Allied to *T. picta*, Perty; distinguished immediately by the black thorax and two fasciæ, deeper sulcation, &c.

13. *TRIPLATOMA SIVA*.

*Nigra, parum nitida, capite prothoraceque vix punctatis, fere alutaceis; elytris subsulcatis, sulcis obsolete punctatis, annulo*



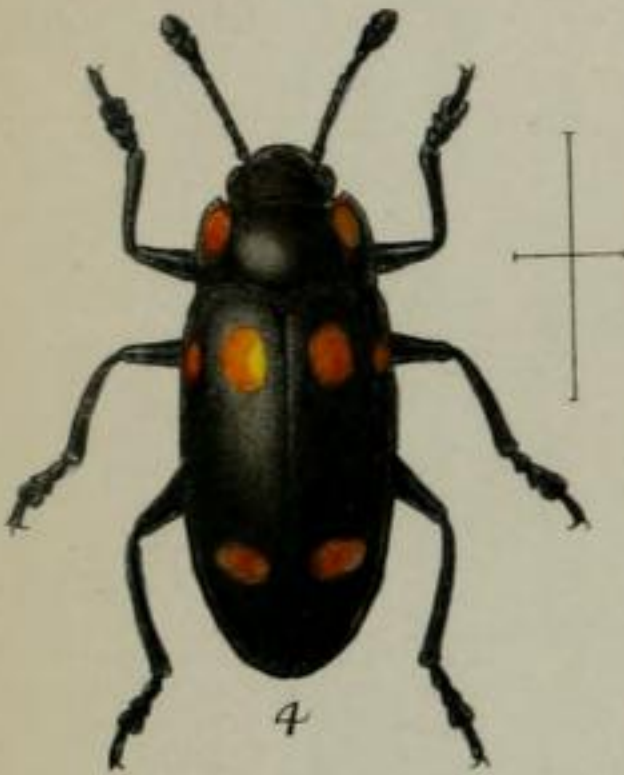
1



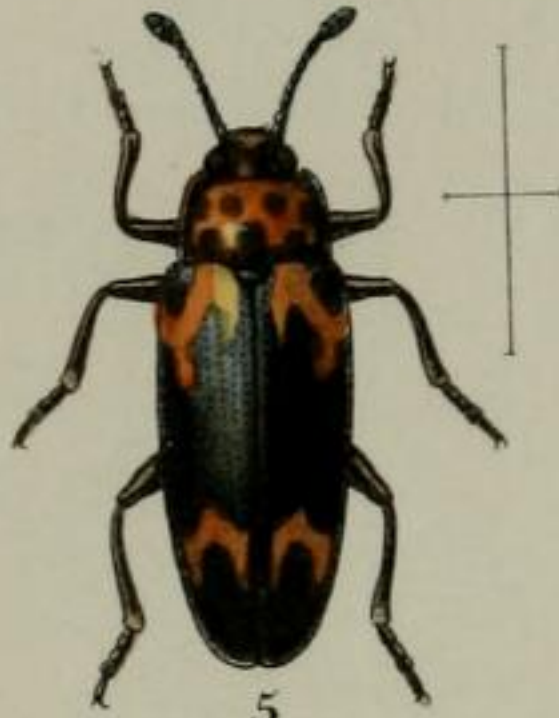
2



3



4



5



6



7



8



9



10



11



12

W. Purkiss lith.

Hanhart imp.

NEW SPECIES OF EROTYLIDÆ.