

NEW SPECIES OF *CASSENA* WEISE (GALERUCIDAE)
COLEOPTERA.

By G. E. BRYANT,

Commonwealth Institute of Entomology.

DESCRIPTIONS are given below of six new species in the genus *Cassena* Weise. There has been great confusion over this genus, which has been placed by Heikertinger & Csiki (1940) in the latest Junk Catalogue of Halticidae. The name of this genus, which is undoubtedly Galerucid, takes priority over *Solephyma* Maulik, which Maulik proposed to take the place of *Euphyma* Baly and *Solenia* Jacoby. All these genera, now placed in error in the Halticidae, had been missed in the Junk Catalogue of Galerucidae by Weise (1924).

Maulik states in his volume of the Fauna of British India dealing with Galerucidae (1926) that *Solephyma* is superficially like the genus *Podagrica* on account of its colour and of the two impressions on the base of the prothorax. The posterior femora are, however, not dilated, and it is undoubtedly a Galerucid. Maulik also overlooked the genus *Cassena* when engaged on this volume of the F.B.I., as at that time it was regarded as Halticid, and there was no up-to-date Catalogue. Blackburn, Baly, Jacoby and Maulik all considered the genus to be Galerucid, a course with which I agree.

Cassena Weise.

Weise, 1892, Deutsch. ent. Zeit., p. 388. Type species: *Cassena celebensis* Weise *loc. cit.* p. 389, by present designation.

Key to species from New Guinea and Sarawak.

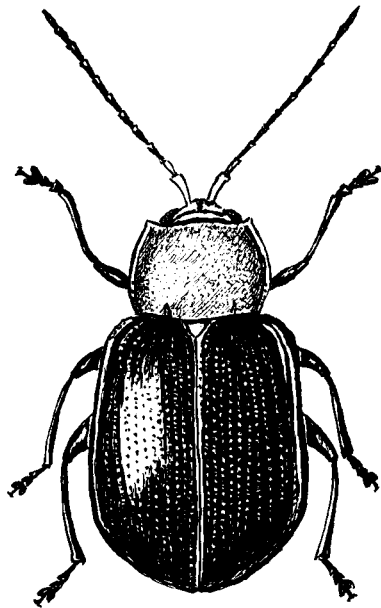
- | | | |
|---|---|------------------------|
| 1 | Length more than 5 mm..... | 2 |
| | Length 5 mm. or less..... | 7 |
| 2 | (1). Antennæ fulvous..... | 3 |
| | Antennæ dark fuscous, with up to five basal segments
fulvous or flavous..... | 4 |
| 3 | (2). Elytra metallic purple, finely semipunctate striate, nitid.. | <i>femorata</i> Jac. |
| | Elytra dark blue, strongly and irregularly punctate..... | <i>celebensis</i> Jac. |
| 4 | (2). Basal segment of antennæ fulvous, second slightly infus-
cate; elytra blue, very finely punctate; tibiæ and tarsi
fuscous; underside fulvous..... | <i>brooksi</i> sp. n. |
| | Basal three or four segments of antennæ flavous..... | 5 |
| 5 | (4). Basal three segments of antennæ flavous..... | 6 |
| | Basal three segments of antennæ and half of fourth flavous;
elytra dark violaceous, closely punctured; prothorax
flavous, impunctate..... | <i>papua</i> Jac. |
| 6 | (5). Prothorax impunctate, flavous; elytra dark blue, finely
and irregularly punctate..... | <i>cowleyi</i> Blkb. |
| | Prothorax strongly punctate, flavous; elytra dark blue,
strongly and irregularly punctate..... | <i>celebensis</i> Wss. |
| 7 | (1). Prothorax metallic blue; finely and closely punctate; head
blue, elytra blue, finely and irregularly punctate-striate,
antennæ flavous; tarsi flavous, the tibiæ darker..... | <i>concolor</i> sp. n. |
| | Prothorax flavous or bronze..... | 8 |

- 8 (7). Elytra bronze, or banded twice with black 9
 Elytra metallic purple, almost impunctate; prothorax pale
 flavous, the sides margined *albertisi* Jac.
- 9 (8). Head and prothorax metallic bronze, elytra metallic bronze
 antennæ and legs fulvous, prothorax very minutely
 punctate, underside fuscous *montana* sp. n.
 Head and prothorax flavous, elytra bronze, or banded with
 black, antennæ and legs flavous or fulvous; prothorax
 very minutely punctate 10
- 10 (9). Underside black, legs black, prothorax flavous; elytra
 metallic bronze *flavicollis* sp. n.
 Underside flavous, legs flavous 11
- 11 (10). Elytra dull bronze *cheesmanae* sp. n.
 Elytra flavous banded with black near base and at apex *wallacei* sp. n.

Cassena brooksi sp. n. (Fig. 1).

Head, prothorax, basal segment of the antennæ, scutellum and femora, fulvous. Elytra metallic blue, finely and irregularly punctate-striate. Length, 6.0 mm.

Fig. 1.



Cassena brooksi sp. n.

♂ and ♀ Head fulvous, impunctate, a transverse impression between the eyes, and a short longitudinal impression between the base of the antennæ. Antennæ extending to middle of elytra; first segment longest, fulvous, dilated at the apex, the second half as long and slightly fuscous, third to eleventh about equal, and a third longer than the second, fuscous. Prothorax fulvous, transverse, nitid with very fine scattered

punctures, the sides rounded and margined with two short impressions on basal margin. Scutellum fulvous, triangular, impunctate. Elytra metallic blue, broader than base of prothorax, slightly broadening to middle and rounded to apex, finely and irregularly punctate-striate. Legs with femora fulvous and apical portion fuscous, tibiæ and tarsi fuscous and pubescent. Male with first segment of anterior tarsi dilated. Underside fulvous, clothed with pubescence.

SARAWAK (C. J. Brooks) 1928. Holotype (British Museum Collection).

SARAWAK. Foot of Mt. Dulit, 4.x.1921. Oxford University Expedition. Two paratypes.

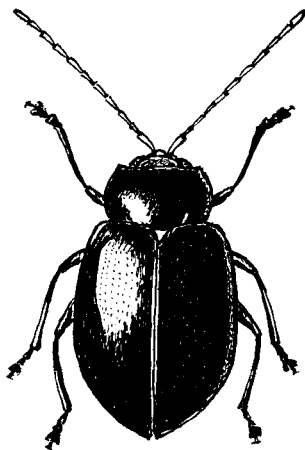
SARAWAK. Quop, iv.1914 (G. E. Bryant). Two paratypes. Lundu, 7.i.1914 (G. E. Bryant). One paratype.

Allied to *C. robusta* Jac. but more elongate and narrower, brighter blue and more strongly punctate-striate.

Cassena concolor sp. n. (Fig. 2).

Entirely blue, antennæ and tarsi flavous, prothorax finely and closely punctured, elytra finely and irregularly punctate-striate. Length, 4.5 mm. Head dark blue, nitid, impunctate, impressed between the

Fig. 2.



Cassena concolor sp. n.

eyes. Antennæ extending slightly beyond the middle of the elytra, flavous; first segment longest, second much the shortest. Prothorax deep blue, sides rounded and narrowly margined, very finely and closely punctured, two impressions on basal margin. Scutellum deep blue, triangular, impunctate. Elytra deep blue, nitid, wider than base of prothorax, sides rounded to slightly beyond middle and thence rounded to apex, finely and irregularly punctate-striate. Legs with tarsi flavous, femora and tibiæ darker. Underside black, clothed with short fine silvery pubescence.

PAPUA ; Kokoda, 1,200 ft., x.1933 (Miss L. E. Cheesman). Holotype (British Museum Collection).

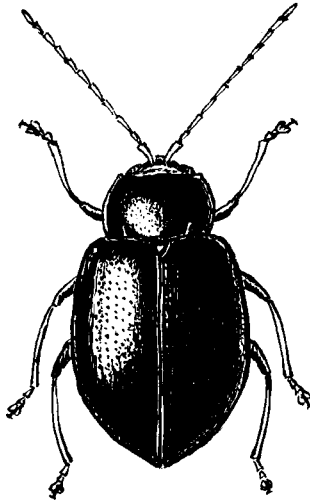
PAPUA ; Ishurava, 3,000 ft., vii.1933. Paratype.

This is the first entirely blue species to be described, all the described species with blue elytra having the prothorax flavous or fulvous.

Cassena montana sp. n. (Fig. 3).

Shining bronze with exception of antennæ and legs which are fulvous; prothorax very minutely punctured with two short impressions on the basal margin; elytra with the punctures stronger and striæ irregular. Length, 4.5 mm.

Fig. 3.



Cassena montana sp. n.

Head bronze, nitid, impunctate, transversely impressed between eyes. Antennæ fulvous, extending to middle of elytra, the first segment longest and dilated at apex, second shortest, half as long as first, third slightly longer than second, the third to eleventh each about equal. Prothorax bronze, nitid, and transverse, two short impressions on basal margin, sides rounded and narrowly margined, with very minute scattered punctures. Scutellum bronze, nitid, triangular impunctate. Elytra bronze elongate, wider than base of prothorax, sides gradually broadening to just beyond middle and thence rounded to apex, finely and irregularly punctate-striate. Legs fulvous, femora slightly darker. Underside fuscous.

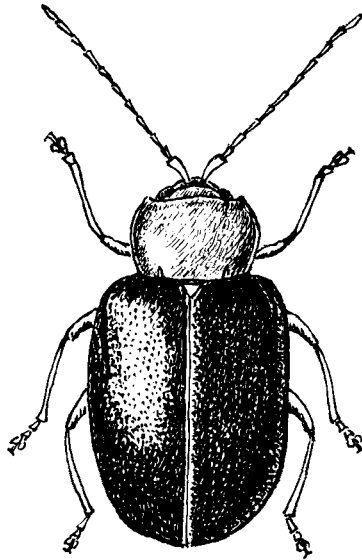
PAPUA. Mafulu, 4,000 ft., i.1934 (Miss L. E. Cheesman). Holotype and paratype (in the British Museum Collection). Somewhat allied to *C. cheesmanae* Bry. but more nitid and entirely bronze, the elytra more closely punctured but irregularly striate.

Cassena cheesmanae sp. n. (Fig. 4).

Head, prothorax, antennæ, scutellum, legs and underside flavous. Elytra dull metallic bronze with very close punctures. Length 5.0 mm.

♂ and ♀. Head flavous, nitid, impunctate, a transverse impression between eyes. Antennæ extending to middle of elytra, first segment longest and dilated at apex, the segments flavous with apical portion of each slightly darker. Prothorax flavous, transverse, nitid, with very minute punctures, and with two short impressions on the basal margin, sides narrowly margined. Scutellum flavous, triangular, impunctate. Elytra elongate, rounded to apex, dull metallic bronze, closely punctured. Legs flavous, male with first segment of anterior tarsi dilated. Underside flavous.

Fig. 4.



Cassena cheesmanae sp. n.

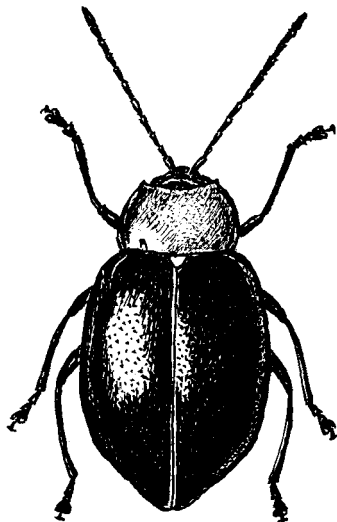
PAPUA. Mt. Tafa, 8,500 ft., iii.1934 (Miss L. E. Cheesman). 44 specimens, holotype and paratypes (British Museum Collection).

This is a very distinct species on account of its dull bronze colour, the majority of the described species having the elytra blue.

Cassena flavicollis sp. n. (Fig. 5).

Head and prothorax flavous, antennæ fulvous with apex of segments fuscous. Elytra metallic bronze, irregularly punctate. Legs and underside black. Head flavous, impunctate, transversely impressed between eyes. Length, 5.0 mm.

Fig. 5.

*Cassena flavicollis* sp. n.

Antennæ extending to middle of elytra, basal segment longest and dilated at apex, all segments fulvous, with the apex fuscous. Prothorax flavous, nitid, impunctate, two short impressions on band margin, sides narrowly margined, anterior angles produced. Scutellum flavous, triangular, impunctate. Elytra ovate, metallic bronze, irregularly punctate. Legs and underside black.

PAPUA. Mafulu, 4,000 ft., i.1934 (Miss L. E. Cheesman). Holotype and three paratypes (British Museum Collection).

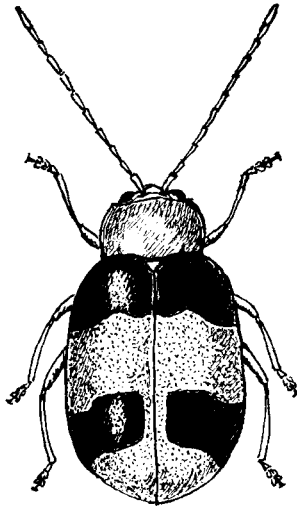
Allied to *C. cheesmanae* Bry. but more nitid and the elytra more metallic, and not so closely punctate.

Cassena wallacei sp. n. (Fig. 6).

Oblong ovate, flavous except for a black transverse band at the base of the elytra and a black patch near the apex, very finely punctate-striate. Length, 5.0 mm.

Head flavous, impunctate, with a triangular impression between eyes. Antennæ flavous, first segment longest and slightly dilated at apex, second segment shortest and half as long as first, the third to eleventh each about equal, and each twice as long as second. Prothorax flavous, nitid, transverse, impunctate with two short longitudinal impressions on basal margin, sides feebly margined, slightly contracted in front, anterior angles prominent. Scutellum flavous, triangular, impunctate. Elytra broader than base of prothorax, sides beyond middle gradually rounded to apex, flavous, a broad transverse black band along base and a large black patch near apex on side margin but not extending to suture, punctation fine and slightly irregular. Legs and underside flavous.

Fig. 6.

*Cassena wollacei* sp. n.

NEW GUINEA: Dorey (A. R. Wallace) from Baly Coll., Reg. No. 1867-56. Holotype and four paratypes (British Museum Collection).

A very distinct species on account of its coloration, flavous and black. Allied to *C. celebensis* (Jac.) as regards structure.